

# TECHNICAL RIDER VENUE DE GROTE POST 2024



## LOCATION

Hendrik Serruyslaan 18A  
8400 Oostende

## CONTACT TECHNICAL CREW

Matisse De Groote	Technician	Matisse.degroote@degrotepost.be
Klaas Neyt	Technician/Venue Rental	Klaas.neyt@degrotepost.be
Toon Soete	Teamcoach	Toon.soete@degrotepost.be
Bartold Uyttersprot	Technician	Bart.uyttersprot@degrotepost.be
Jelle Van Meerbergen	Technician/Venue Rental	Jelle.vanmeerbergen@degrotepost.be

## CONTACT PRODUCTION

Marie Lamon	+32485500317	Marie.lamon@degrotepost.be
Leni Pyra	+32485500317	Leni.pyra@degrotepost.be

## CONTACT VENUE RENTAL

Jens Compernelle	Venue Rental	+3259855605	Jens.compernelle@degrotepost.be
Allison Moyaert	Venue Rental	+3259855605	Allison.moyaert@degrotepost.be

## INDEX

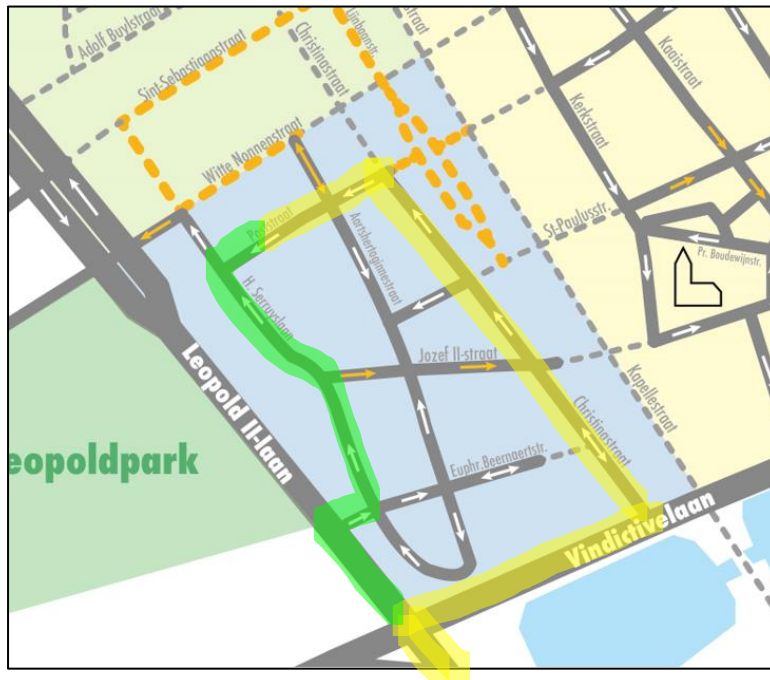
1. VENUE SPECS .....	3
Load-in and load-out .....	3
AUDITORIUM .....	4
FOH .....	4
STAGE .....	5
PROSCENIUM .....	5
2. RIGGING .....	6
3. POWER .....	8
4. LIGHT .....	9
5. SMOKE .....	9
6. AUDIO .....	10
7. VIDEO .....	12

# 1. VENUE SPECS

## Load-in and load-out

Poststraat, 8400 Oostende

- Yellow: Cars, vans, box vans
- Green: Trucks

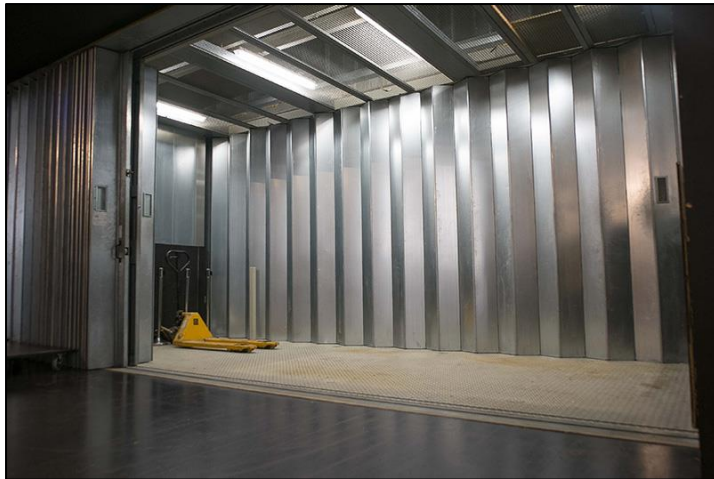


- Dimensions loading dock:
  - Platform: W 6.4m x D 2.5m
  - Height platform: adjustable from 0.95m to 1.34m
  - Extendable ramp: lowest point is 0.55m (does not extend to street level!)
- Dimensions opening loading dock: H 2.8m x W 6.7m



Updated January 2024

Dimensions elevator: H 2,8m x W 2,5m x L 6,1m



## AUDITORIUM

Seats without proscenium (row ABC): 431

Seats with proscenium A: 410

Seats with proscenium AB: 389

Seats with proscenium ABC: 368

Length: 20,5m

Width: 17.3m

Height: 3m to 10,2m

## FOH

In the back of the auditorium (no balcony) W 5m x D 1,8m x H 3m

## STAGE

Manteau: W 14m x H 7,4m

Depth from backdrop/fond without proscenium: 9m

Depth from backdrop/fond with proscenium A: 9.95m

Depth from backdrop/fond with proscenium AB: 10.9m

Depth from backdrop/fond with proscenium ABC: 11.85m

Height above stage: 14m

Height above proscenium: 9m

Legs: H8m x W3.38m

Borders: H4m x W19m

Valence: H6m x W19m

Backdrop/fond and front curtain are on rails: H8m x W19m

White cyclo: H8m x W15m

Resilient floor

Marley dance floor: Black, stage: W18m x D9m + proscenium W14m x D2,85m

## PROSCENIUM

- Contains of 3 parts
- Total depth  $3 \times 95\text{cm} = 2.85\text{m}$
- Hydraulic
- Can be used as extra stage or to seat audience

## 2. RIGGING

FLYBAR #	PLACE	ITEM
AXIS 111	<i>Proscenium</i>	
AXIS 110	<i>Proscenium</i>	
AXIS 109	<i>Proscenium</i>	
AXIS 108	<i>Proscenium</i>	
AXIS 107	<i>Proscenium</i>	
AXIS 106	<i>Proscenium</i>	
AXIS 105	<i>Proscenium</i>	
AXIS 104	<i>Proscenium</i>	
<b>AUDIO FOH ONLY</b>		
AXIS 101	<i>Proscenium</i>	
<b>MANTEAU</b>		
AXIS 1	<i>STAGE</i>	VALENCE
AXIS 2	<i>STAGE</i>	FRONT CURTAIN ON RAIL
AXIS 3	<i>STAGE</i>	
AXIS 4	<i>STAGE</i>	
AXIS 5	<i>STAGE</i>	
AXIS 6	<i>STAGE</i>	BORDER
AXIS 7	<i>STAGE</i>	LEGS
AXIS 8	<i>STAGE</i>	
AXIS 9	<i>STAGE</i>	
AXIS 10	<i>STAGE</i>	
AXIS 11	<i>STAGE</i>	BORDER
AXIS 12	<i>STAGE</i>	LEGS
AXIS 13	<i>STAGE</i>	
AXIS 14	<i>STAGE</i>	
AXIS 15	<i>STAGE</i>	
AXIS 16	<i>STAGE</i>	
AXIS 17	<i>STAGE</i>	BORDER
AXIS 18	<i>STAGE</i>	LEGS
AXIS 19	<i>STAGE</i>	
AXIS 20	<i>STAGE</i>	
AXIS 21	<i>STAGE</i>	
AXIS 22	<i>STAGE</i>	
AXIS 23	<i>STAGE</i>	BORDER
AXIS 24	<i>STAGE</i>	LEGS
AXIS 25	<i>STAGE</i>	WHITE CYCLO
AXIS 26	<i>STAGE</i>	FOND/BACKDROP ON RAIL
AXIS 91	<i>STAGE</i>	JARDIN OUTER / LEGS
AXIS 92	<i>STAGE</i>	JARDIN INNER
AXIS 93	<i>STAGE</i>	COUR INNER
AXIS 94	<i>STAGE</i>	COUR OUTER / LEGS

- Stage

- 26x automatic controlled fly-bars (Trekwerk TNM) Length 19m
- Max height 14m
- Total lifting capacity 300kg ELL
- Point load underneath and between steel cables: 150kg ELL
- Point load at the end of the fly-bar: 50kg ELL
- Separated load between cables: 150kg ELL
- **Person flying is prohibited**
- Speed:

- Default time

Distance	DOWN time	UP time
1m	4.4 sec	4.4 sec
4m	10.4 sec	10.4 sec
10m	22.4 sec	22.4 sec

- Proscenium

- 9x automatic controlled fly-bars (Trekwerk TNM) Length 16m
- Max height 9m
- Total lifting capacity 300kg ELL
- Point load underneath and between steel cables: 150kg ELL
- Point load at the end of the fly-bar: 50kg ELL
- Separated load between cables: 150kg ELL

- Rigging Material (shared between GP & KP)

Manfroto wind-up 6m	8
Manfroto T-Bar	8
Dance tower	6
Reutlinger	8
Sofsteels	14
Steels 3m	6
Steels 4m	8
Doughty clamp	15
Shackle	50

- Mobile stage elements

Stage deck 2x1m	Scissor legs	4
Stage deck Prolite 2x1m	Adjustable legs(4)	1

### 3. POWER

Connections:	Jardin:	2x125 Amp, 2x63 Amp, 3x32 Amp
	Sound Jardin:	1x63 Amp, 1x32 Amp, 1x16 Amp
	Cour:	1x125 Amp, 1x 63 Amp

3 phase electric power 400V



## 4. LIGHT

- Dimer: ADB Eurodim TWIN-TECH - 240ch 3KW
  - 36x floor connections
  - 24x connections in bridge for front lighting
  - 180x connections for fly-bars
  
- Controller: Chamsys MQ60 + wing
  
- Fixtures:

<b>ADB</b>	Profile - DS205	2 kw	13° - 36°	12
<b>ADB</b>	Profile – DVW105	Shortnose 1,2 kw	38° - 57°	12
<b>ADB</b>	Profile – DW105	Longnose 1,2 kw	15° - 38°	12
<b>ADB</b>	PC – C203	2 kw	8°-58°	12
<b>ADB</b>	PC - 103	1,2 kw	7° - 61°	28
<b>ADB</b>	Fresnell – F101	1,2kw	13° - 59°	12
<b>ADB</b>	ACP – ACP1001	1kw	-90°- 90°	8
<b>ADB</b>	ALC 4	Asymmetric reflector		6
<b>PAR Thomas</b>	PAR	1kw	Cp60, 61, 62	27
<b>Robe</b>	Actor 6	Ledwash	8°- 63°	14

## 5. SMOKE

<b>Antari</b>	Z-3000II	1 (shared between GP & KP)
<b>MDG</b>	ATMe	1 (shared between GP & KP)
<b>Swefog</b>	XEON II intellahazer	1 (shared between GP & KP)

## 6. AUDIO

- **Decibel restriction of 95 dB(A)LAeq,15min**
- FOH
  - **RENKUS HEINZ VARIA**

<b>Flown system per side</b>	2xVA101-7/6-52R	1X VA101-15/69-52R	1xVA101-22/9-52R
<b>Stacked system per side</b>	1xVA101-22/9-52R	2xVA15S-5R	
<b>Center flown</b>	1xVA101-22/69-52R	1x101-22/912-52R	
<b>Front Fill</b>	4xTRX61		

- Mixers

<b>Allen&amp;Heath D-live</b>	C2500 + CDM32	6in/6out (local), 32in/16out (rack)
-------------------------------	---------------	-------------------------------------

- Monitors

<b>Martin</b>	LE 1200	8
---------------	---------	---

- Amps

<b>Powersoft</b>	M30D DSP eth 2x 1500w/4ohm	4
------------------	----------------------------	---

- Communication

<b>ASL</b>	2CH station	1
<b>ASL</b>	Single beltpack	4
<b>ASL</b>	Dual Beltpack	2

- Microphones

<b>AKG</b>	D112	1
<b>Audio Technica</b>	AE 3000	2
<b>Audio Technica</b>	AE5400	1
<b>DPA</b>	Sc4098	1
<b>DPA</b>	4099 LO	2
<b>DPA</b>	4099 HI	2
<b>DPA</b>	4061 (black)	2
<b>EV</b>	RE20	1
<b>Neumann</b>	Km184	2
<b>Schertler</b>	Dyn-GP-set	1
<b>Shure</b>	Beta 52	1
<b>Shure</b>	Beta 57	2
<b>Shure</b>	Beta 58	5
<b>Shure</b>	Beta 91	1
<b>Shure</b>	Sm 57	4

<b>Shure</b>	Sm58	6
--------------	------	---

- Wireless

<b>SONY DWX series</b>	Handheld with Beta58 capsule	2
<b>SONY DWX series</b>	Beltpack with DPA Headset (tan color)	4

- DI

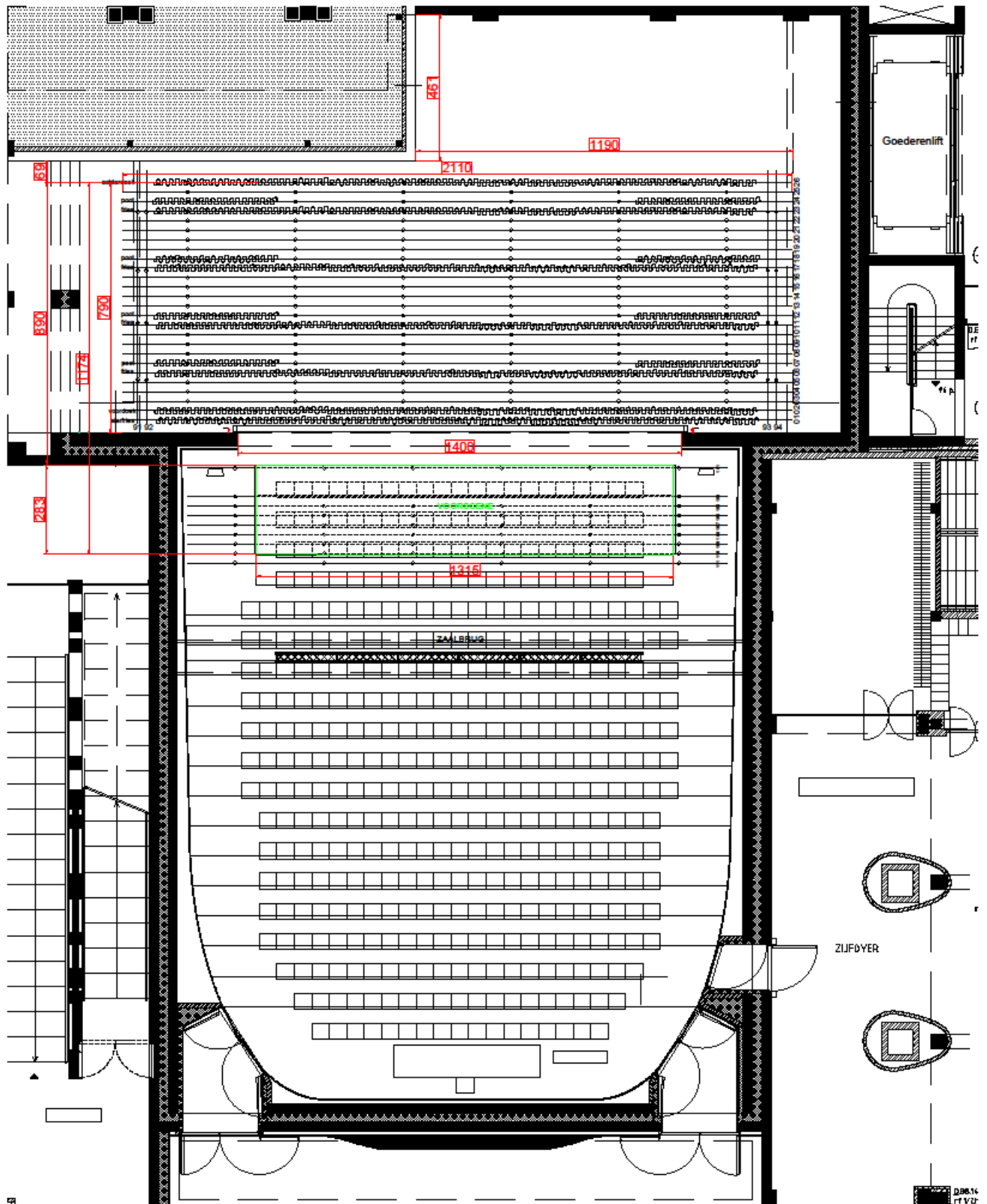
<b>Radial</b>	J48	8
<b>Radial</b>	Pro DI	4
<b>Radial</b>	JPC	2
<b>Radial</b>	twin iso	1

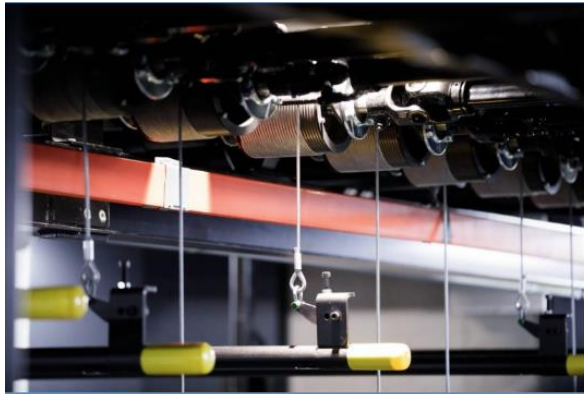
- Stands

<b>K&amp;M</b>	Long boom	16
<b>K&amp;M</b>	Medium boom	7
<b>K&amp;M</b>	Short boom	1
<b>K&amp;M</b>	Table stand	4
<b>K&amp;M</b>	Straight mic-stand, round base	1

## 7. VIDEO

<b>Beamer</b>	EPSON EB-PU2220B	WUXGA – 20.000 lumen	1
<b>Lens</b>	ELPLW06 (wide-throw#2)	Zoom 1-1.4 / Throw ratio 1.19 – 1.62	1
<b>Mixer/Switcher</b>	Roland V-160HD		1
<b>Converter (shared between GP &amp; KP)</b>	BMD micro converter	HDMI to SDI	1
	BMD micro converter	HDMI to SDI 3G	2
	BMD micro converter	Bidirectional	2
	BMD micro converter	Bidirectional 3G	1
	BMD mini converter	SDI to HDMI 6G	2
<b>Pointer</b>	PerfectCue Micro		1
<b>Screen</b>	White cyclo H8m x W15m	15.3m from beamer to axis 25	





## Line shaft winch

The line shaft winch is very compact and can drive one shaft with single-line drums. The line shaft winch is often placed in theaters with limited height above the stage and no fly loft.

Several small drums (steel or nylon) are connected by cardan-shafts. Each of the drums has its own suspension frame and mounting points. At one end a motor frame drives the shaft.

By making use of the standard available industrial a-synchronous motors and gearboxes, the design is ready to be equipped with the required gear ratio and capacity. Typical are loads up to maximal 500kg with speeds up to 1,2 m/s.

## Your benefits

- Ideal solution for theaters without a fly tower
- wide range of possible loads and speed
- Easy to adapt the number and position of the drums to the existing building
- Simple and fast installation: short installation time

## Technical specs

WLL	300 kg (< 500 kg)
Speed	0 – 1,2 m/sec
Motor	A-Synchronous
Reductor	To be selected
Steel cable	5 mm (6 mm)
Cable drum	Steel or nylon, 1 line per drum
Connection between motor en drums	Cardan
Dynamic load sensing	Yes
Absolute encoder	Yes
Dual brake	Yes
Loose cable detection	Yes
Person Flying (SIL3)	No

Source: <https://trekwerk.com/our-system/overstage-machinery/other-overstage-solutions/>